



PROJECT		REF		REV	ITEM CODE	
LOCATION		DATE			PAGE	

SANITARY WARE SPECIFICATION SHEET

Item Descriptions	GROHE (Germany) "Atrio" 5-hole bath & shower combination with chrome plated finish
Dimensions	Refer to drawing
Model	19923003
Finish / Material	Chrome Plated
Country of origin Manufacturer	Germany GROHE Limited
Supplier	Acme Sanitary Ware Co. Ltd Mr. Eric Wong/ Mr. Don Yuen
Contact Tel/Fax	(852) 2388-7171 / (852) 2710-8012
E-mail	acme@acmesanitary.com.hk
Website	www.acmesanitary.com.hk

Illustration/ Drawing

"Atrio"
5-hole bath/shower combination

- ceramic headparts 1/2", 90°
- GROHE StarLight** chrome finish
- Consisting of:
 - pre-assembled spout fixing with cross handles
 - bath spout with mousseur and diverter bath/shower
 - Sena hand shower 6.6 l/min
 - shower hose 2000 mm
 - flexible connection hoses
 - connection for shower hose
 - protected against backflow
 - can be used with 29 037 002
 - Two different sets of caps included. One set with "H" and "C" marking, one set without marking.

GROHE ATRIO

THE ICON OF ELEGANCE AND PRECISION

Consider the circle. A staple of natural geometry. A pure form at once soothing and dynamic. A visual metaphor for both, completeness and eternity. For its Atrio collection GROHE draws on this most elemental and elegant form to create an iconic object that is built to last.

The Atrio collection means design without restrictions. Each item is available in various finishes and size options to meet all demands of personal taste and different design schemes.

Colour options:

● 003 StarLight Chrome	● GL3 Cool Sunrise
● DC3 SuperSteel	● GN3 Brushed Cool Sunrise
● DA3 Warm Sunset	● DL3 Brushed Warm Sunset
● A03 Hard Graphite	● BE3 Polished Nickel
● AL3 Brushed Hard Graphite	● EN3 Brushed Nickel



Note: [YouTube \(GROHE Atrio Product\) https://www.youtube.com/watch?v=HJDtY_EFMdM](https://www.youtube.com/watch?v=HJDtY_EFMdM)

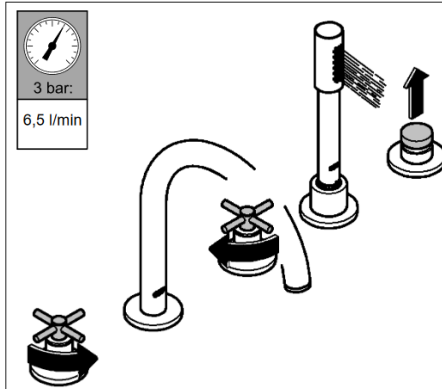
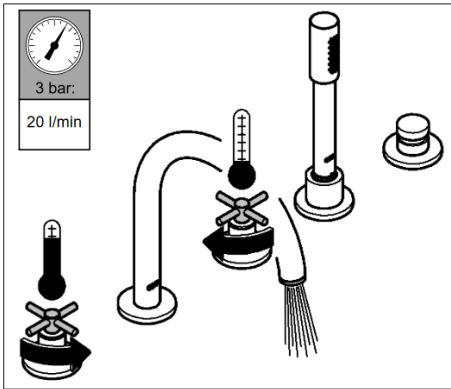
[YouTube \(Grohe - Atrio\) https://www.youtube.com/watch?v=Xz20bzMrYEE](https://www.youtube.com/watch?v=Xz20bzMrYEE)

* All information of the above is for the reference only. No prior notice is made if any changes.

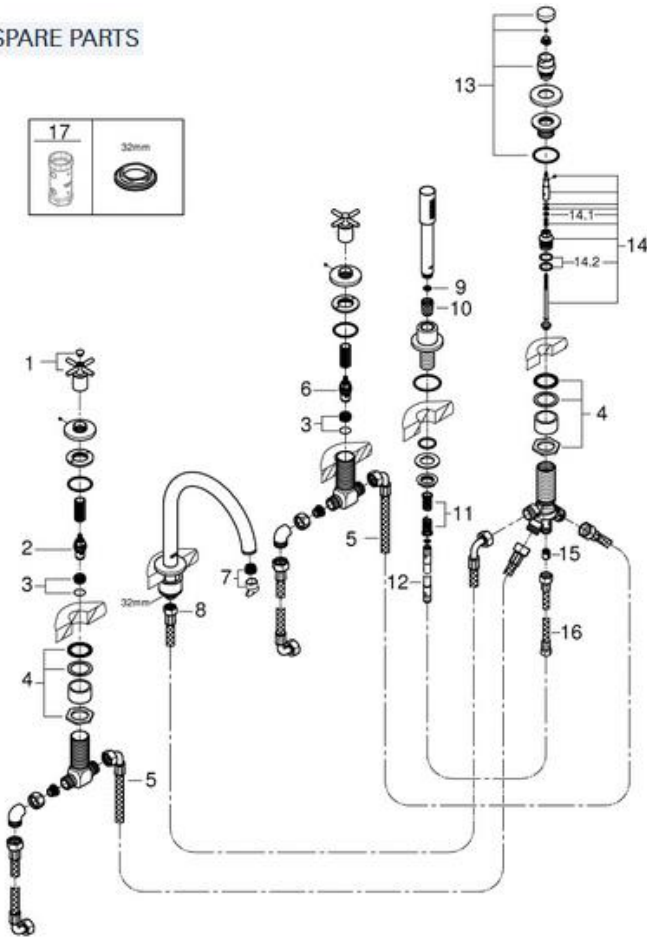


PROJECT		REF		REV	ITEM CODE	
LOCATION		DATE			PAGE	

SANITARY WARE SPECIFICATION SHEET



SPARE PARTS



Pos.-nr.	Prod. description	Order-nr.
1	Cross handle bath	18033003
2	Ceramic headpart 3/4"	45888000
3	Valve seat 3/4"	45345000
4	Replacement kit for shank fastening	45444000
5	Connecting hose	48019000
6	Ceramic headpart 3/4"	45887000
7	Mousseur	13926000
8	Connecting hose	48018000
9	Dirt strainer	0700200M
10	Cone nut	08864000
11	Compression spring	00869000
12	Metal shower hose	28146000
13	Diverter knob	48411000
14	Diverter	45443000
14.1	Sealing washer Ø 6 x Ø 2	0128300M
14.2	Sealing washer	0120500M
15	Non-return valve	08565000
16	Connecting hose	07300000
17	Socket spanner	19332000*

* Optional accessories

Note:

* All information of the above is for the reference only. No prior notice is made if any changes.